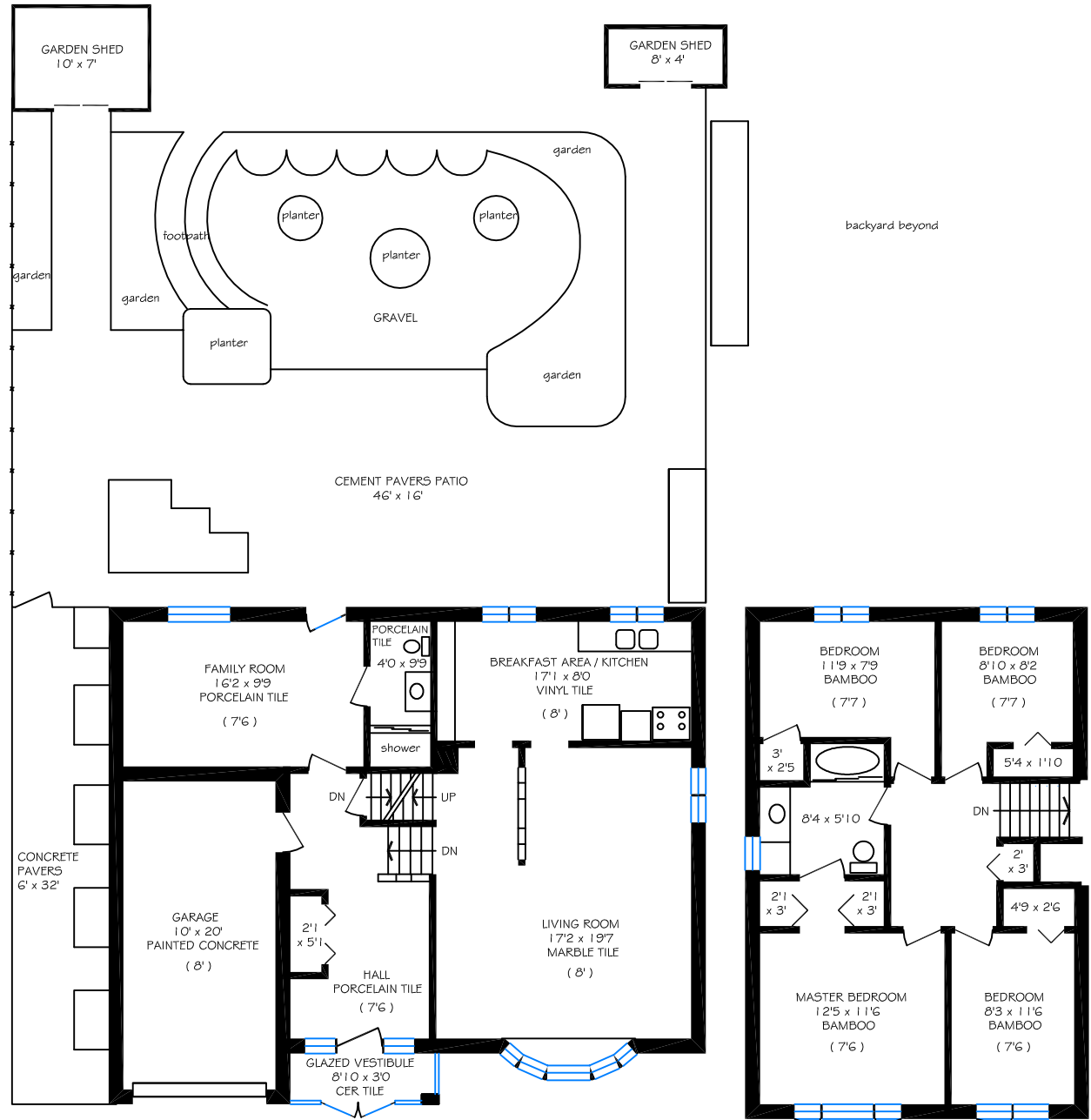


# 3120 Centennial Drive

Total above ground floor area is 1810 sq ft

Kevin Alvarez  
Sales Representative  
Royal LePage Real Estate Services  
Tel (416) 762-8255



BASEMENT FLOOR = 1010 SQ FT  
LIVEABLE AREA = 540 SQ FT

GROUND FLOOR = 1010 SQ FT

SECOND FLOOR = 800 SQ FT