

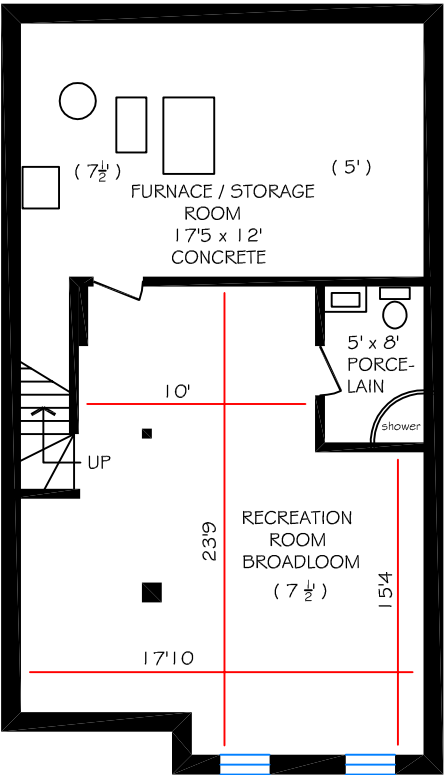
3397 Eglinton Avenue

Total above ground floor area is 1920 sq ft

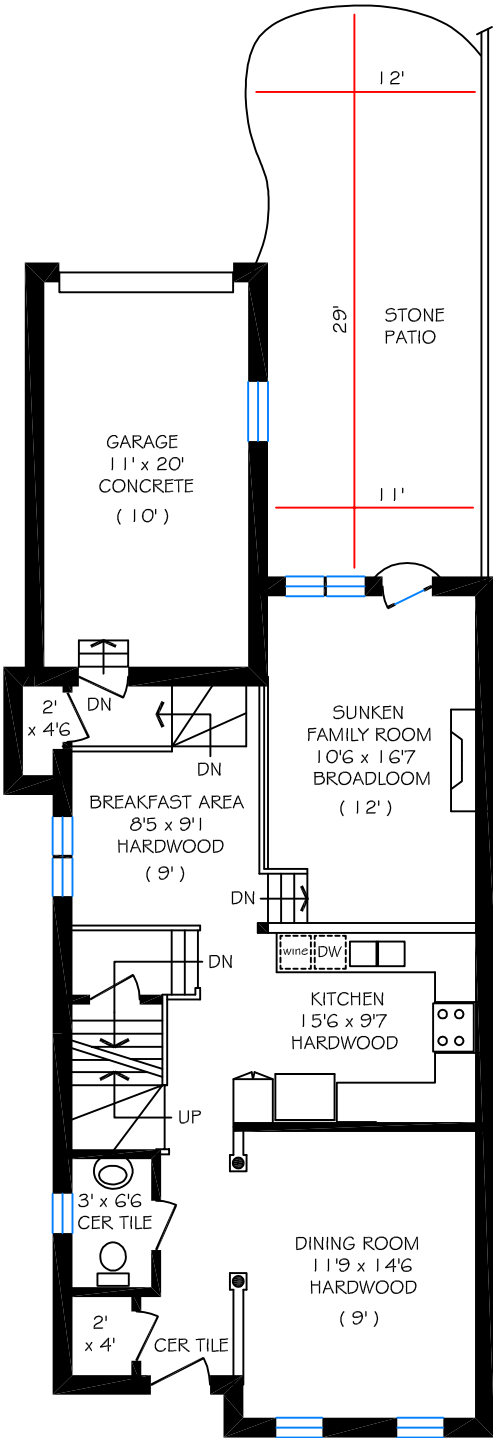


No warranty is made or implied as to the accuracy of the information contained herein.

(12') refers to ceiling height

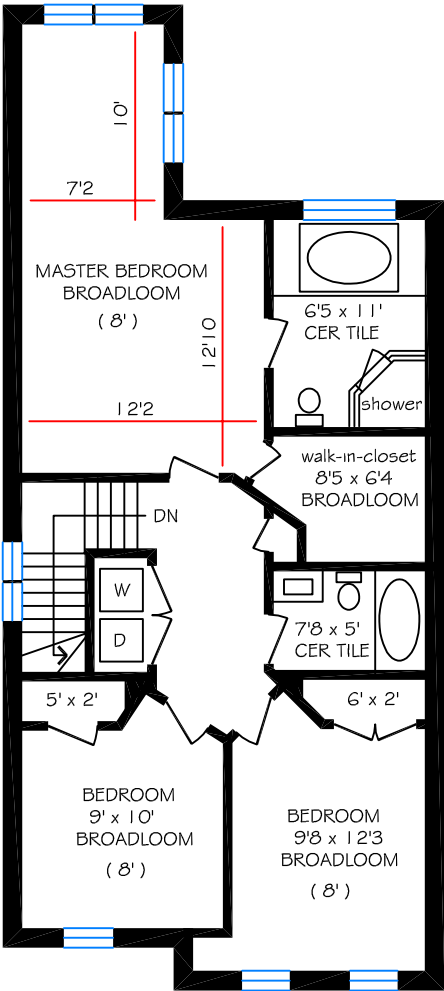


BASEMENT FLOOR = 860 SQ FT



GROUND FLOOR = 940 SQ FT

Kevin Alvarez, Sales Representative
Royal LePage Real Estate Services
Tel (416) 205 - 0355



SECOND FLOOR = 980 SQ FT