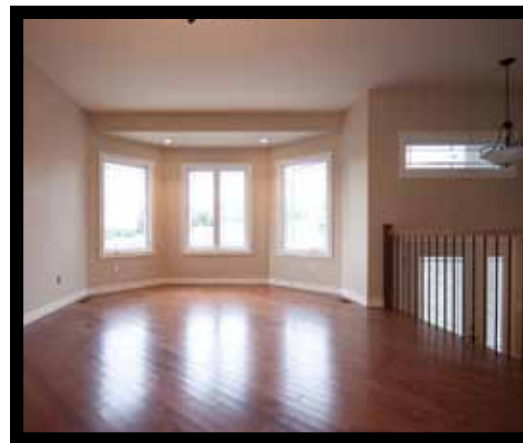


BOSTON MODEL

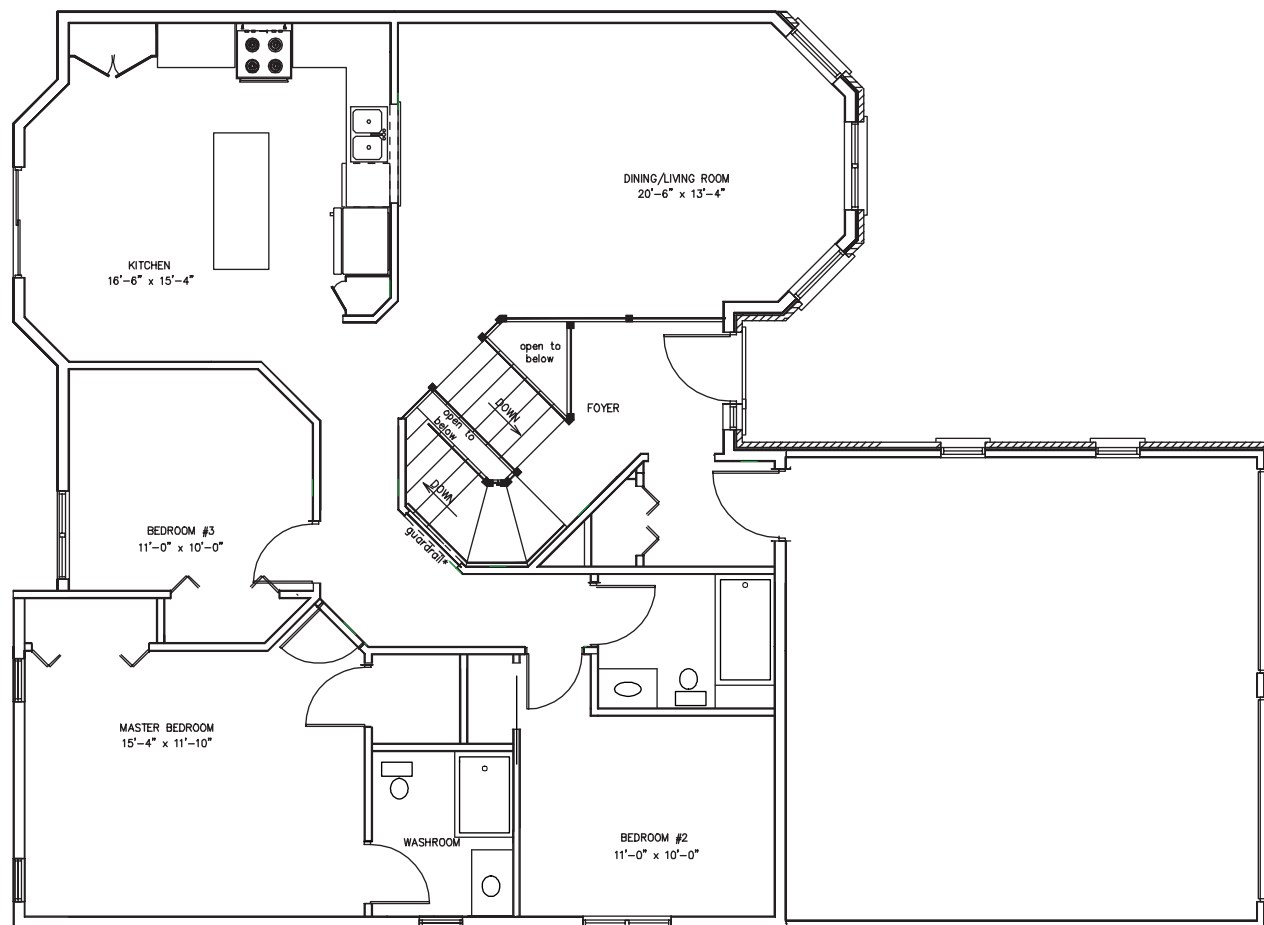


THE BOSTON MODEL is a well appointed and very unique split entry bungalow with optional cathedral ceilings and custom stairs and railings. This 1360 sq.ft. home boasts open concept kitchen living and dining areas with walkout to deck. 3 bedrooms – 2 bathrooms – master ensuite and large finished family room.



*Total Living 2060 sq. ft.
(2530 sq.ft.)*

ZULICH
homes



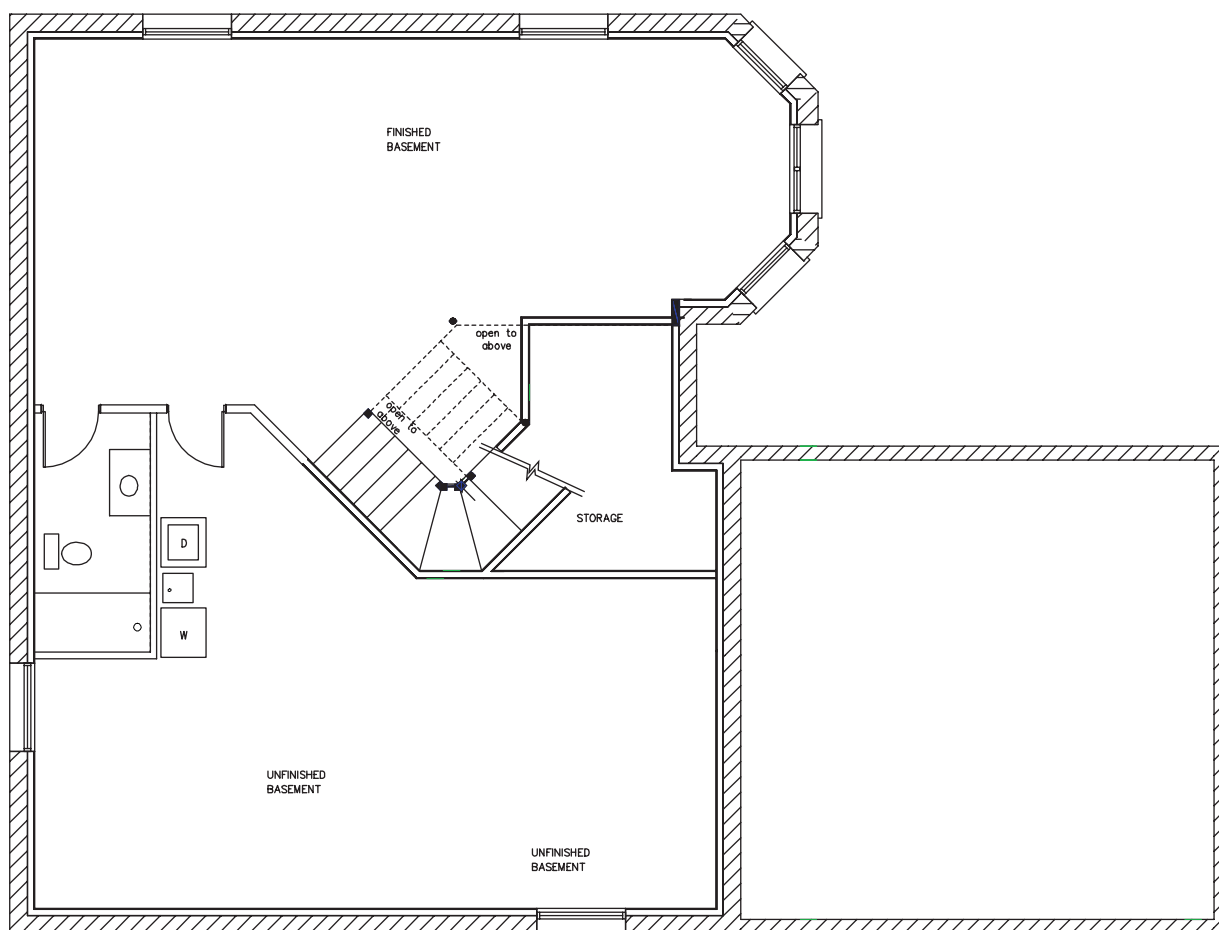
Main floor 1416 sq. ft.

*2 bedroom and 3 bedroom
with one bathroom
plans available*

*Kitchen can be
full open concept to
dining/living area*

BOSTON MODEL

ZULICH
homes



*Finished Basement
644 sq.ft.*

*Optional basement
3 piece bathroom*

*Optional 4th
bedroom or office*

*Total potential basement
living space 1114 sq. ft.*

BOSTON MODEL

ZULICH
homes